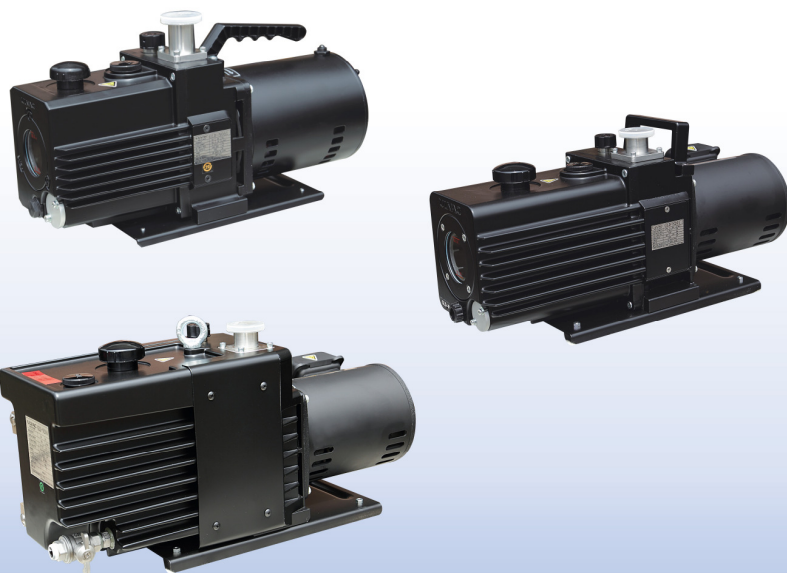


Oil Rotary Vacuum Pump[GLD Series]

GLD Series is a superior-type pump featuring high performance, low vibration, low noise and many excellent functions .



Features

- ▶ Gas-ballasting to prevent vapor (i. e. water) from condensing in the pump oil.
- ▶ A forced oil supply mechanism which helps maintain oil lubrication and pumping speeds over the entire pumping range from atmosphere to high vacuum.
- ▶ An anti-suckback device which protects the vacuum chamber in the event of power failure.
- ▶ The low temperature enables the pump to produce improved levels of vacuum.
- ▶ Using a large, easy-to-read oil level gauge to make it easy to check the situation of oil.

Applications

- ▶ Automatic pumping line of compressor, refrigerator, air-conditioner, water dispenser
- ▶ Physics and chemical experiments, analyzing appliances, laser-related facilities.
- ▶ High-vacuum pumping systems, backing systems for electron microscopes
- ▶ Semiconductor manufacturing equipment, sputtering, evaporation, illuminant.
- ▶ Vacuum drying, freeze drying, Analytical instruments and leak testers.

Low Vacuum Pump

Oil Rotary Vacuum Pump[GLD Series]

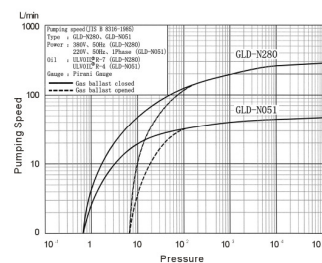
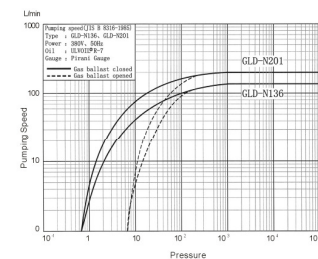
Specifications

| Item | Model | Specifications | | | |
|------------------------|-------------------------|--|----------|------------|----------|
| | | GLD-N051 | GLD-N136 | GLD-N201 | GLD-N280 |
| Frequency | Hz | 50 | | | |
| Designed Pumping speed | L/min | 60 | 165 | 240 | 336 |
| Ultimate pressure | G.V closed ² | 6.7x10 ⁻¹¹ | | | |
| | G.V opened ² | 6.7 | | | |
| Motor | V | 220(Single phase) 380(Three phases) | | | |
| | W | 200 | 400 | 550 | 750 |
| Pump oil | | ULVOIL R-4 | | ULVOIL R-7 | |
| Oil capacity | mL | 500~800 | 1000 | 1100 | 750~1500 |

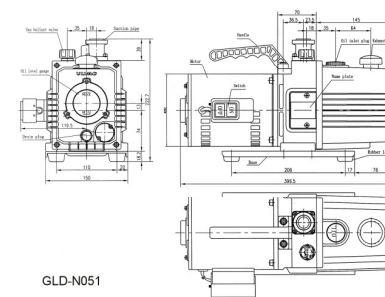
*1. Measured with a Pirani gauge (Approx. 6.7x10⁻¹⁰Pa when measured with a McLeod vacuum gauge).

*2. G.V is abbreviates by gas ballast valve.

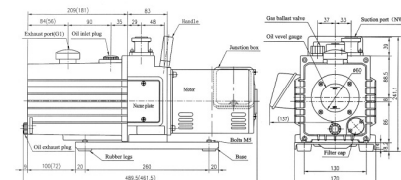
Pumping Speed Curves



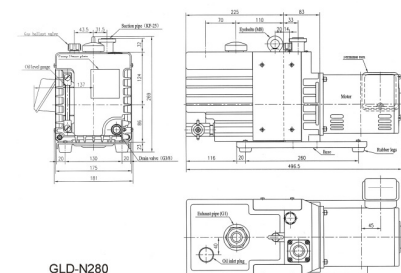
Dimensional drawing



GLD-N051



GLD-N201/N136 Note: Dimensions in [] are GLD-N136 model



GLD-N280